

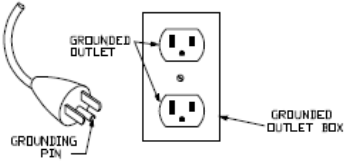
## WARNING: DRY VACUUM

Any piece of equipment can be dangerous if not operated properly. **YOU** are responsible for the safe operation of this equipment. The operator must carefully read and follow any warnings, safety signs and instructions provided with or located on the equipment. Do not remove, defeat, deface or render inoperable any of the safety devices or warnings on this equipment. If any safety devices or warnings have been removed, defeated, defaced or rendered inoperable, **DO NOT USE THIS EQUIPMENT!!!**

**⚠WARNING:** Operating, servicing and maintaining this equipment can expose you to chemicals including Chromium (Hexavalent Compounds) & Chromium 6 (Chromium VI) from concrete which are known to the State of California to cause cancer and birth defects or other reproductive harm. To minimize your exposure, avoid breathing dust. For more information go to [www.P65warnings.ca.gov](http://www.P65warnings.ca.gov)

### IMPORTANT SAFETY RULES TO FOLLOW:

⚠	WARNING	⚠	WARNING
	<p>To reduce the risk of fire, electric shock, or injury:</p> <ul style="list-style-type: none"><li>• Do not leave the vacuum when it is plugged in. Unplug the unit from the outlet when not in use and before servicing.</li><li>• This vacuum cleaner is intended only for use indoor and for dry and wet pick-up.</li><li>• Do not allow to be used as a toy or to be used by children. Close attention is necessary when used near children.</li><li>• Use only as described in this manual. Use only the manufacturer's recommended attachments.</li><li>• Do not use with damaged cord or plug. If the vacuum is not working as it should be, has been dropped, damaged, left outdoors or dropped into water, return it to a Makita service center.</li><li>• Do not pull or carry by the cord, use the cord as a handle, close a door on the cord, or pull the cord around sharp edges or corners. Do not run the appliance over the cord. Keep the cord away from heated surfaces.</li><li>• Do not unplug by pulling on the cord. To unplug, grasp the plug, not the cord.</li><li>• Do not handle the plug, cord or appliance with wet hands.</li><li>• Do not put any object into openings. Do not use with any opening blocked; keep free of dust, lint, hair, and anything that may reduce air flow.</li></ul>		<ul style="list-style-type: none"><li>• Keep loose clothing, hair, fingers, and all parts of body away from openings and moving parts.</li><li>• Turn off all controls before unplugging.</li><li>• Use extra care when cleaning on stairs.</li><li>• Do not use to pick up flammable or combustible liquids such as gasoline or use in areas where they may be present.</li><li>• Do not pick up anything that is burning or smoking, such as cigarettes, matches, or hot ashes.</li><li>• Do not use without dustbag and filters in place for dry dust pickup. Details in picking up liquids can be found in chapter 2.3.</li><li>• Connect to a properly grounded outlet only. See grounding instructions.</li><li>• Tool should be turned off before placing switch in the auto position.</li><li>• Only connect a tool rated 5 amperes maximum to this Receptacle.</li></ul>

⚠	WARNING
	<p>This appliance is for use on a nominal 120-V circuit and has a grounding attachment plug that looks like the plug illustrated.</p>  <p>The diagram shows a three-pronged grounded outlet with two vertical slots and a round grounding pin. A separate grounding pen is shown with a label 'GROUNDING PEN'. The outlet is labeled 'GROUNDING OUTLET' and the box it is in is labeled 'GROUNDING OUTLET BOX'.</p> <p>Make sure that the appliance is connected to an outlet having the same configuration as the plug. No adaptor should be used with this appliance.</p>

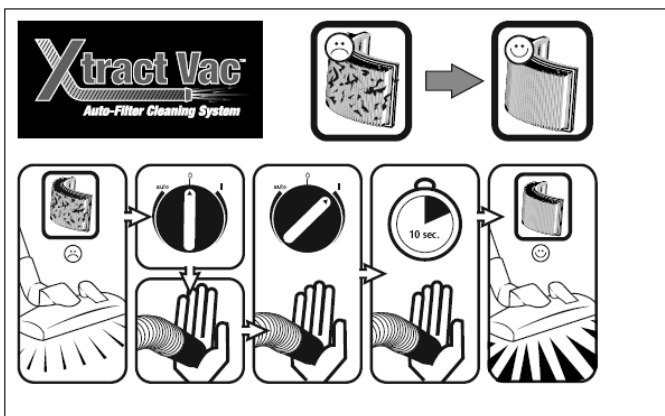
To reduce the risk of fire, electric shock, or injury:

- Do not allow to be used as a toy or to be used by children. Close attention is necessary when used near children.
- Use only as described in this manual. Use only the manufacturer's recommended attachments.
- Do not use with damaged cord or plug. If the vacuum is not working as it should be, has been dropped, damaged, left outdoors or dropped into water, return it to a Makita service center.
- Do not pull or carry by the cord, use the

cord as a handle, close a door on the cord, or pull the cord around sharp edges or corners. Do not run the appliance over the cord. Keep the cord away from heated surfaces.

- Do not unplug by pulling on the cord. To unplug, grasp the plug, not the cord.
- Do not put any object into openings. Do not use with any opening blocked; keep free of dust, lint, hair, and anything that may reduce air flow.

- Keep loose clothing, hair, fingers, and all parts of body away from openings and moving parts.
- Use extra care when cleaning on stairs.
- Do not pick up anything that is burning or smoking, such as cigarettes, matches, or hot ashes.
- See grounding instructions.
- **Tool should be turned off before placing switch in the auto position.**



To ensure that suction performance is always at its best, the filter element is automatically cleaned during operation. We recommend complete cleaning if the filter element becomes extremely dirty.

1. Switch off the vacuum.
2. Close the nozzles or suction hose opening with the palm of your hand.
3. Turn the switch to position "I" and let the vacuum operate for approx. 10 seconds with the suction hose opening closed.

Do not use to pick-up flammable or combustible liquids such as gasoline or use in areas where they may be present. Fire or explosion may occur. And never use in a hazardous environment!

### **SMI Dust and Silica Warning**

Grinding/cutting/drilling of masonry, concrete, metal and other materials can generate dust, mists and fumes containing chemicals known to cause serious or fatal injury or illness, such as respiratory disease, cancer, birth defects or other reproductive harm. If you are unfamiliar with the risks associated with the particular process and/or material being cut or the composition of the tool being used, review the material safety data sheets and/or consult your employer, the manufacturers/suppliers, governmental agencies such as OSHA and NIOSH and other sources on hazardous materials. California and some other authorities, for instance, have published lists of substances known to cause cancer, reproductive toxicity, or other harmful effects.

Control dust, mist and fumes at the source where possible. In this regard use good work practices and follow the recommendations of the manufacturers/suppliers, OSHA/NIOSH, and occupational and trade associations. Water should be used for dust suppression when wet grinding/cutting/drilling is feasible. When the hazards from inhalation of dust, mists and fumes cannot be eliminated, the operator and any bystanders should always wear a respirator approved by NIOSH/MSHA for the material being used.

Grinding/cutting/drilling of masonry, concrete and other materials with silica in their composition may give off dust or mists containing crystalline silica. Silica is a basic component of sand, quartz, brick clay, granite and numerous other minerals and rocks. Repeated and/or substantial inhalation of airborne crystalline silica can cause serious or fatal respiratory diseases, including silicosis. In addition, California and some other authorities have listed respirable crystalline silica as a substance known to cause cancer. When grinding/cutting/drilling such materials, always follow the respiratory precautions mentioned above.

If the person receiving this handout will not be the user of the equipment, forward these instructions to the operator. **IF there is any doubt as to the operation or safety of the equipment, DO NOT USE!!! CALL A TOOL SHED IMMEDIATELY!!! FAILURE TO FOLLOW THESE INSTRUCTIONS COULD RESULT IN INJURY OR DEATH**

- **Only connect a tool rated 5 amperes maximum to this Receptacle.**

**FOR DRY UNITS:** Do not use without paper filter bag and main filter in place.

Do not leave the vacuum when it is plugged in. Unplug the unit from the outlet when not in use

To avoid electric shock, do not expose to rain.

Connect to a properly grounded outlet only. Do not use with damaged cord or plug. Do not pull or carry by cord, use cord as handle, close a door on cord, or pull cord around sharp edges or corners.

Do not run vacuum over cord.

Keep cord away from heated surfaces.

Turn off all controls before unplugging.

Do not unplug by pulling on cord. To unplug, grasp the plug, not the cord.

Do not handle the plug, cord or appliance with wet hands.

Keep hair, loose clothing, fingers, and all body parts away from openings and moving parts.